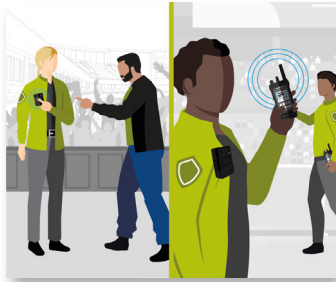


# USE CASE ESCALATED FAN INTERACTION

Safe Stadiums



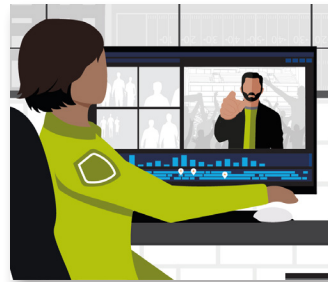
## Operational View



### DETECT

#### DISRUPTIVE FAN REPORTED

A staff member interacts with a disruptive individual and activates their body-worn camera to begin recording. An alert is automatically sent to appropriate staff directly on their device of choice and in the command center.



### ANALYZE

#### SITUATIONAL INTELLIGENCE GATHERED

The operational command center receives the alert and all relevant camera feeds are populated and body-worn camera footage is live streamed. Other nearby security resource locations are identified.



### COMMUNICATE

#### RESOURCES DISPATCHED

Security teams are dispatched to the situation and receive intelligence including an image of the disruptive guest prior to their arrival on scene.



### RESPOND

#### SITUATION CONTAINED AND MITIGATED

The individual is escorted off the premises and an incident report is then securely documented with all relevant data.

## Technology View



### DETECT

- Body-worn Cameras
- Orchestrate



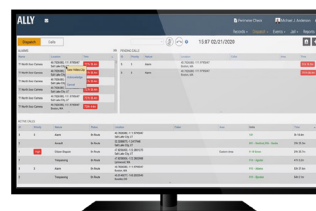
### ANALYZE

- Avigilon Control Center
- Body-worn Cameras
- CommandCentral Aware Enterprise



### COMMUNICATE

- Radio Communications: Voice & Multimedia
- WAVE PTX: Multimedia Sharing & Broadband Push-to-Talk
- Avtec Dispatch Console



### RESPOND

- Ally Incident Management



Motorola Solutions, Inc. 500 West Monroe Street, Chicago, IL 60661 U.S.A. [motorolasolutions.com](https://www.motorolasolutions.com)

MOTOROLA, MOTO, MOTOROLA SOLUTIONS and the Stylized M Logo are trademarks or registered trademarks of Motorola Trademark Holdings, LLC and are used under license. All other trademarks are the property of their respective owners. © 2021 Motorola Solutions, Inc. All rights reserved. 12-2021 [LD04]

\*Camera footage is for illustrative purposes only